

# VIVID 2D USER SPEC

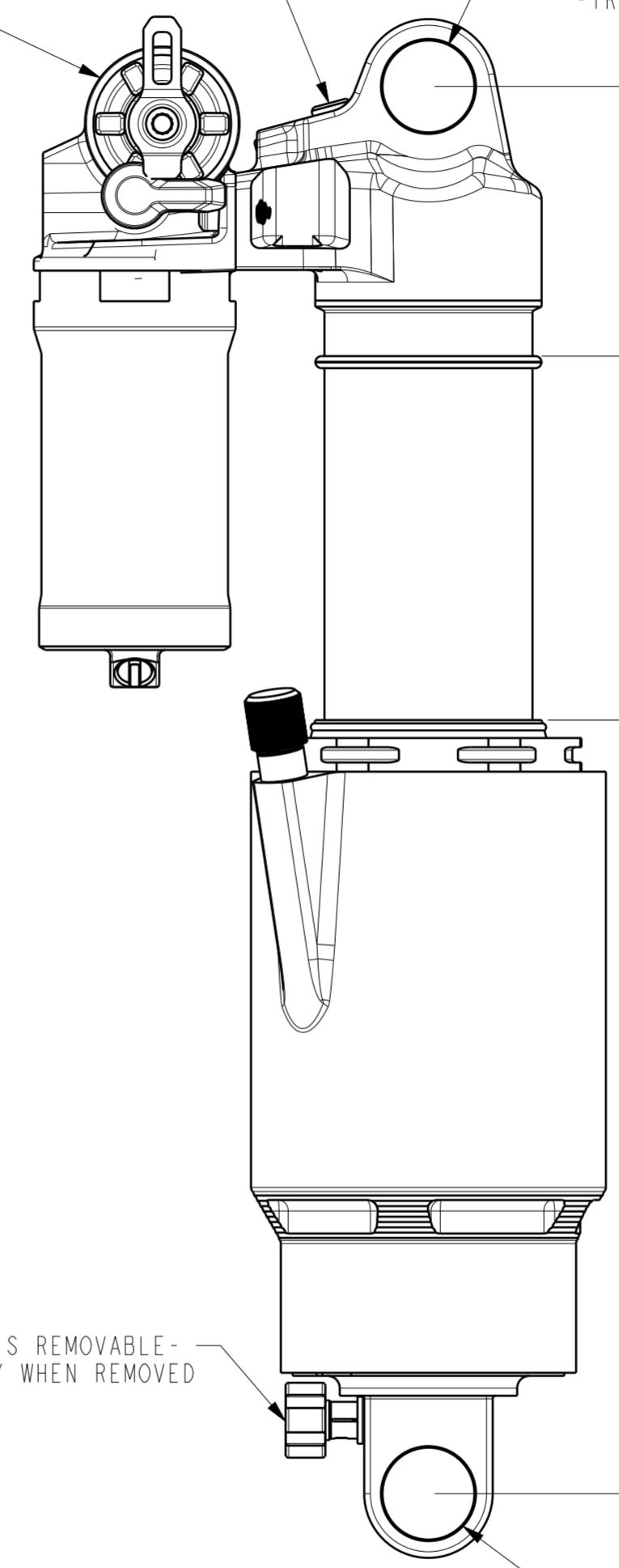
ALL 4 RESERVOIR OPTIONS SHOWN  
IN THIS CAD MODEL.

- ULTIMATE = HSC, LSC, LOCKOUT
- SELECT+ = COMPRESSION, LOCKOUT
- SELECT = LOCKOUT
- BASE = NO RESERVOIR ADJUSTER

HYDRAULIC BOTTOM OUT  
ADJUSTMENT (3MM ALLEN KEY)  
FEATURE IS ON ALL MODELS

BODY END

OPTIONS:  
-STANDARD DU BUSHING (S)  
-NO BUSHING (N)  
-BEARING (B)  
-TRUNNION (T)



STROKE

EYE-TO-EYE

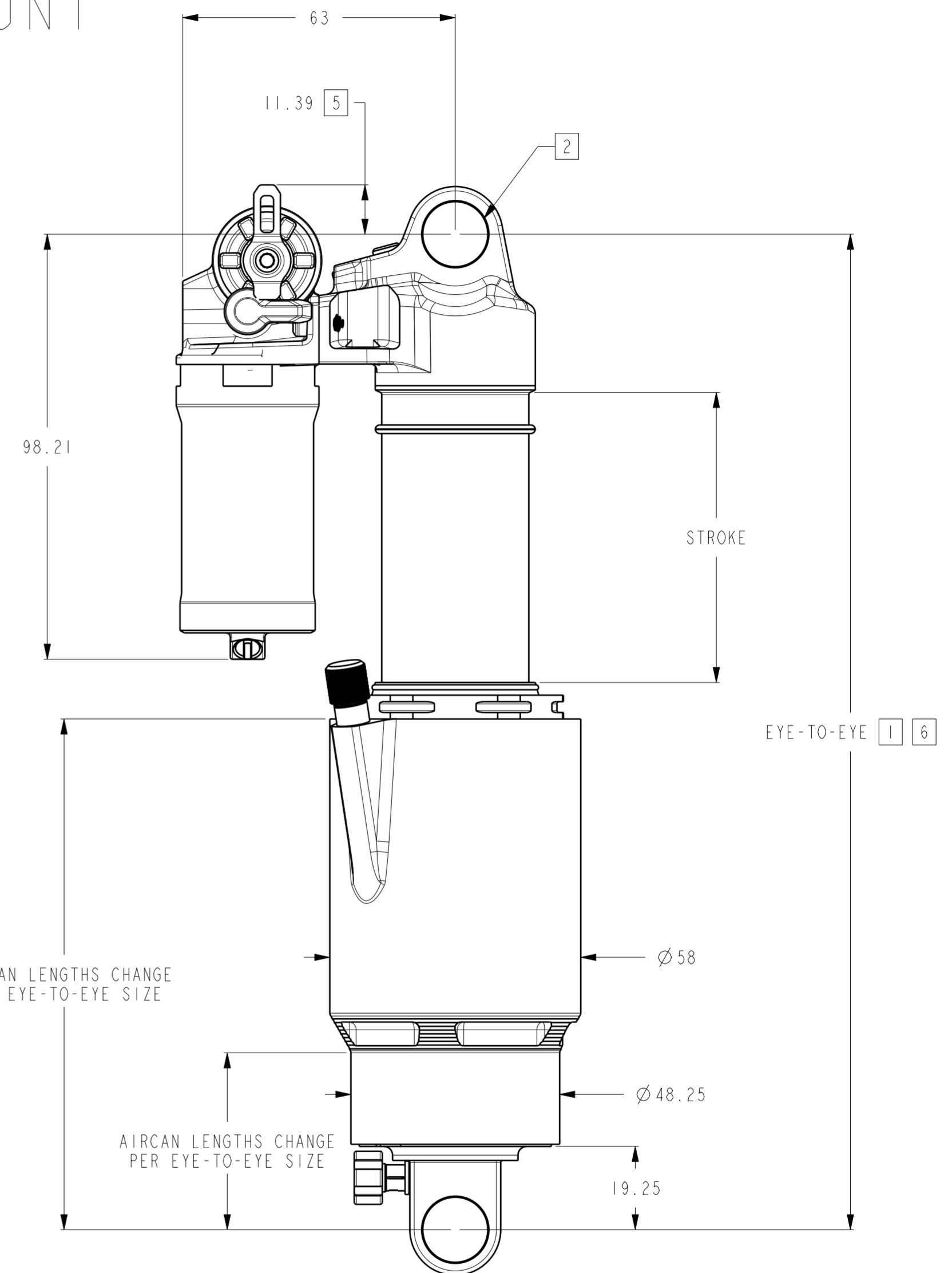
REBOUND ADJUSTER KNOB IS REMOVABLE -  
BECOMES 3MM ALLEN KEY WHEN REMOVED

SHAFT END

OPTIONS:  
-STANDARD DU BUSHING (S)  
-NO BUSHING (N)  
-BEARING (B)

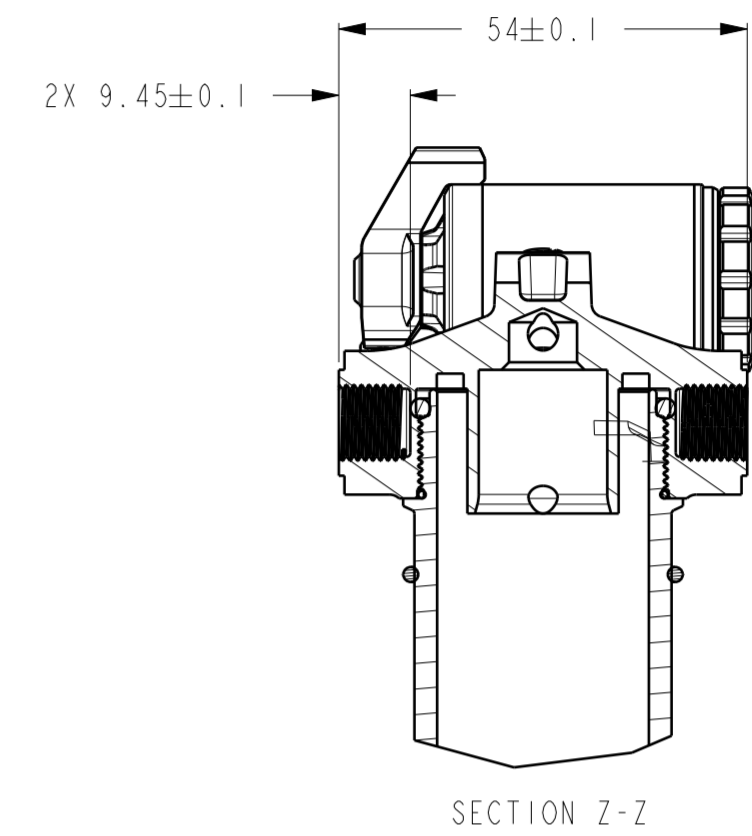
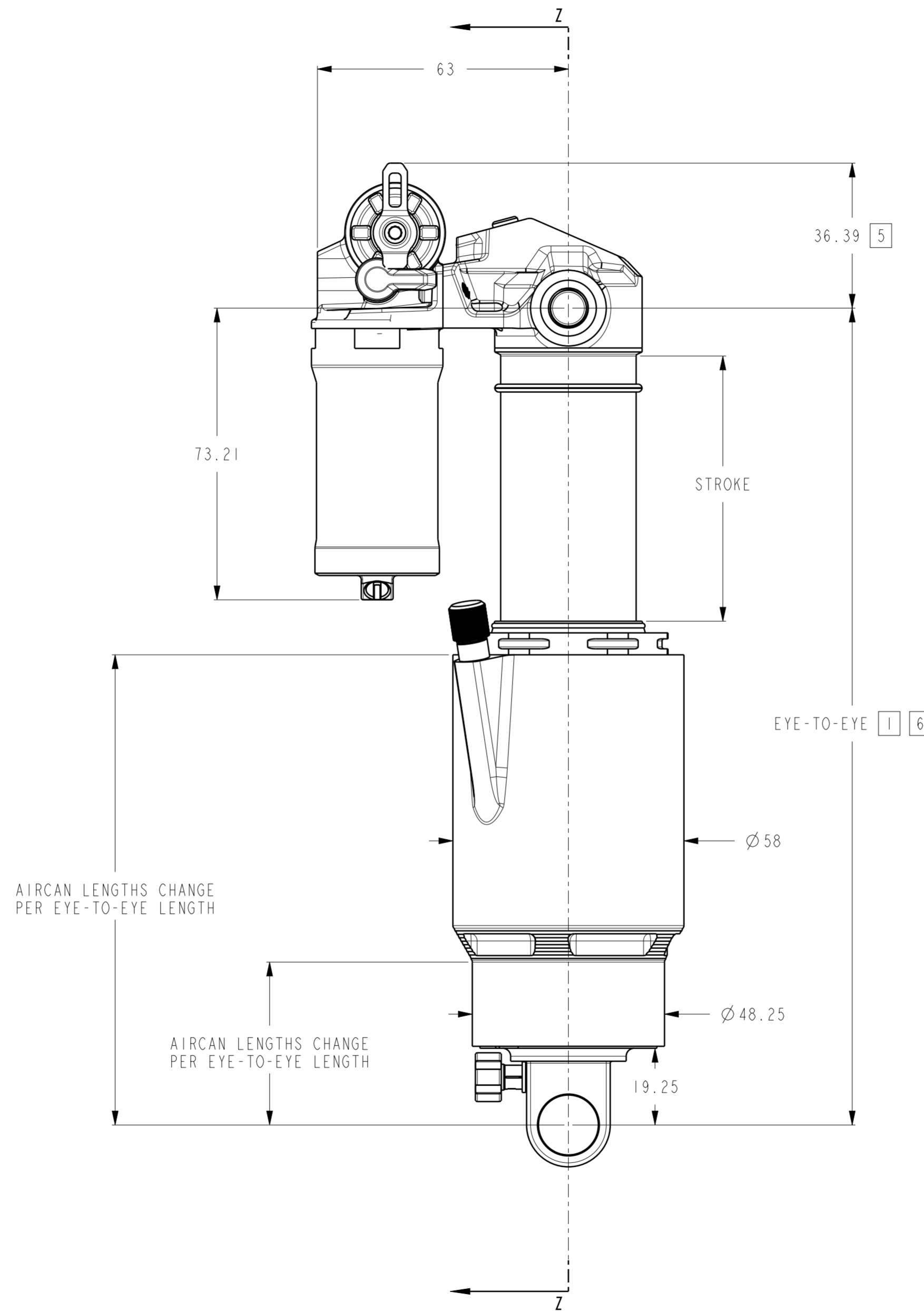
# STANDARD, NO BUSHING AND BEARING MOUNT

EYE-TO-EYE AND STROKE COMBINATIONS [1] [6]		
SHOCK EYE-TO-EYE STANDARD EYELET	STROKE	EXPOSED DAMPER BODY
±1	±1	±1
250	75	77
250	72.5	77
250	70	77
250	67.5	77
230	65	67
230	62.5	67
230	60	67
230	57.5	67
210	55	57
210	52.5	57
210	50	57
210	47.5	57
190	45	47
190	42.5	47
190	40	47
190	37.5	47



# TRUNNION MOUNT

EYE-TO-EYE AND STROKE COMBINATIONS <span style="border: 1px solid black; padding: 0 2px;">1</span> <span style="border: 1px solid black; padding: 0 2px;">6</span>		
SHOCK EYE-TO-EYE STANDARD EYELET	STROKE	EXPOSED DAMPER BODY
±1	±1	±1
225	75	77
225	72.5	77
225	70	77
225	67.5	77
205	65	67
205	62.5	67
205	60	67
205	57.5	67
185	55	57
185	52.5	57
185	50	57
185	47.5	57
165	45	47
165	42.5	47
165	40	47
165	37.5	47



# AIRCAN CLOCKING

